



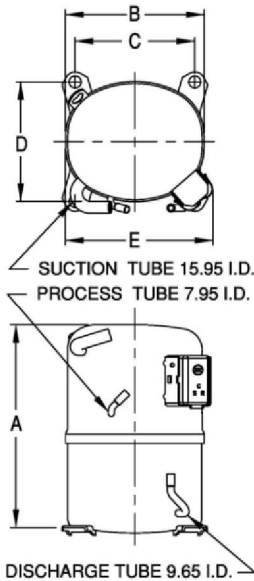
KULTHORN KIRBY PUBLIC CO.,LTD.

TECHNICAL SPECIFICATION

**HERMETIC
COMPRESSOR
AW 7514Z
BOM ID 71H-A1**

UNCONTROLLED COPY

PRINCIPAL DIMENSIONS - mm



A	289
B	223
C	191
D	191
E	239

ELECTRICAL : 220-240 Volt. 50 Hz. 1 Phase

Nominal Performance

Cooling Capacity :	3,664	Watts (12,500)	BTU/Hr
	3,150	Kcal/Hr	
Power Input :	2,034	Watts	
Lock Rotor Amps :	48	Amps	
Rated Load Amps :	10	Amps	
COP (EER) :	1.80	W/W (6.15)	BTU/ W-Hr

Testing Conditions

Condensing Temperature :	54.4	° C
Evaporating Temperature :	-6.7	° C
Liquid Temperature :	46.1	° C
Return Gas Temperature :	35	° C
Ambient Temperature :	35	° C

Application

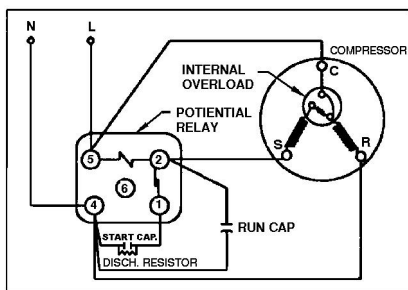
Evaporating Range :	MBP	@ -23.3 ° C to -1.1 ° C
Refrigerant :	R404A	
Expansion :	Capillary Tube	
Compressor Cooling :	Fan	

SCHEMATIC WIRING DIAGRAM

Compressor and Motor data

Compressor Type :	Reciprocating
Displacement :	43.1 cc.
Oil Type :	Polyolester Oil
Oil Charge :	1,050 cc.
Motor Type :	C.S.R. ; 2 Pole 2850 rpm
Voltage Range :	198-253 Volts 50 Hz.
Winding Resistance at 25 ° C	
Start :	3.67 Ohms
Run :	1.43 Ohms
Weight with Oil :	25.66 Kg.
Weight with Oil and Accessories :	26.39 Kg.

SCHEMATIC WIRING DIAGRAM C.S.R.



High Torque Start

Electrical Components

Motor Protector :

Type :	Internal Overload
Model Number :	KGE 656-10
Open / Close :	130-140 78-60 ° C
1st Cycle trip :	31 Amps (start) 52 Amps (main)

Motor Starter (CSR Only) :

Type :	Potential Relay
Model Number :	KGE 680-1(GE3ARR3AX16A2)
Pick Up :	242-272 Volts.
Drop Out :	60-121 Volts.
Terminal Cover :	KGM 901-3

Start Capacitor (CSR Only) :

Disch. Resistor for Start Cap :	15000 Ohms 2 W
---------------------------------	----------------

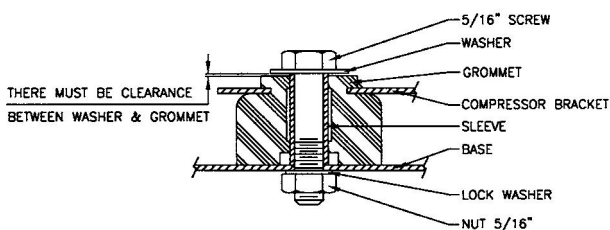
Run Capacitor :

	40 μ F 425 VAC.
--	-----------------

Mounting Kit

Rubber Grommet :	KGM 905
Sleeve Grommet :	KGM 903

MOUNTING KIT



Since we are constantly improving our product ,
the specification are subject to change without notice.

REV. DATE

20-12-11

C / N No.

0512/11